

SEEBURGER

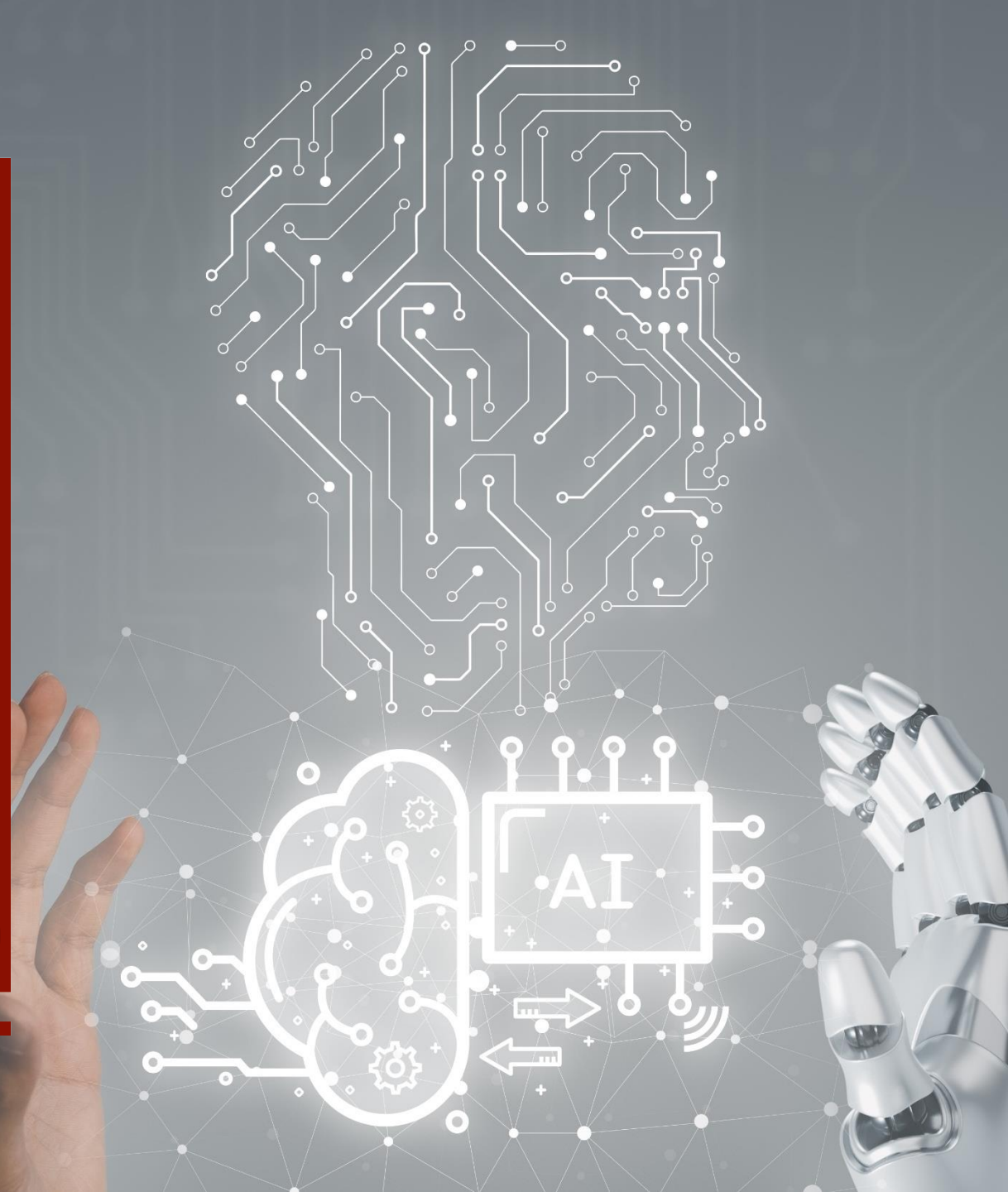
<< Connect >> Automate >>> Innovate

Webcast-Serie | AI Webcast Special Edition

The AI-assisted BIS Mapping Designer is here!

Make your work easier!

Experience our demo tour and
exchange with our experts!





Disclaimer

This publication contains general information only.

SEEBURGER does not provide any professional service with this publication, in particular no legal or tax consulting service. This publication is not suitable for making business decisions or taking actions. For these purposes, you should seek advice from a qualified advisor (e.g. lawyer and/or tax consultant) with regard to your individual situation.

No statements, warranties or representations (express or implied) are made as to the accuracy or completeness of the information in this publication.

SEEBURGER shall not be liable or responsible for any loss or damage of any kind incurred directly or indirectly in connection with any information contained in the presentation.



SEEBURGER

Daniel Kruse

Head of Competence Center
Global Mapping Management

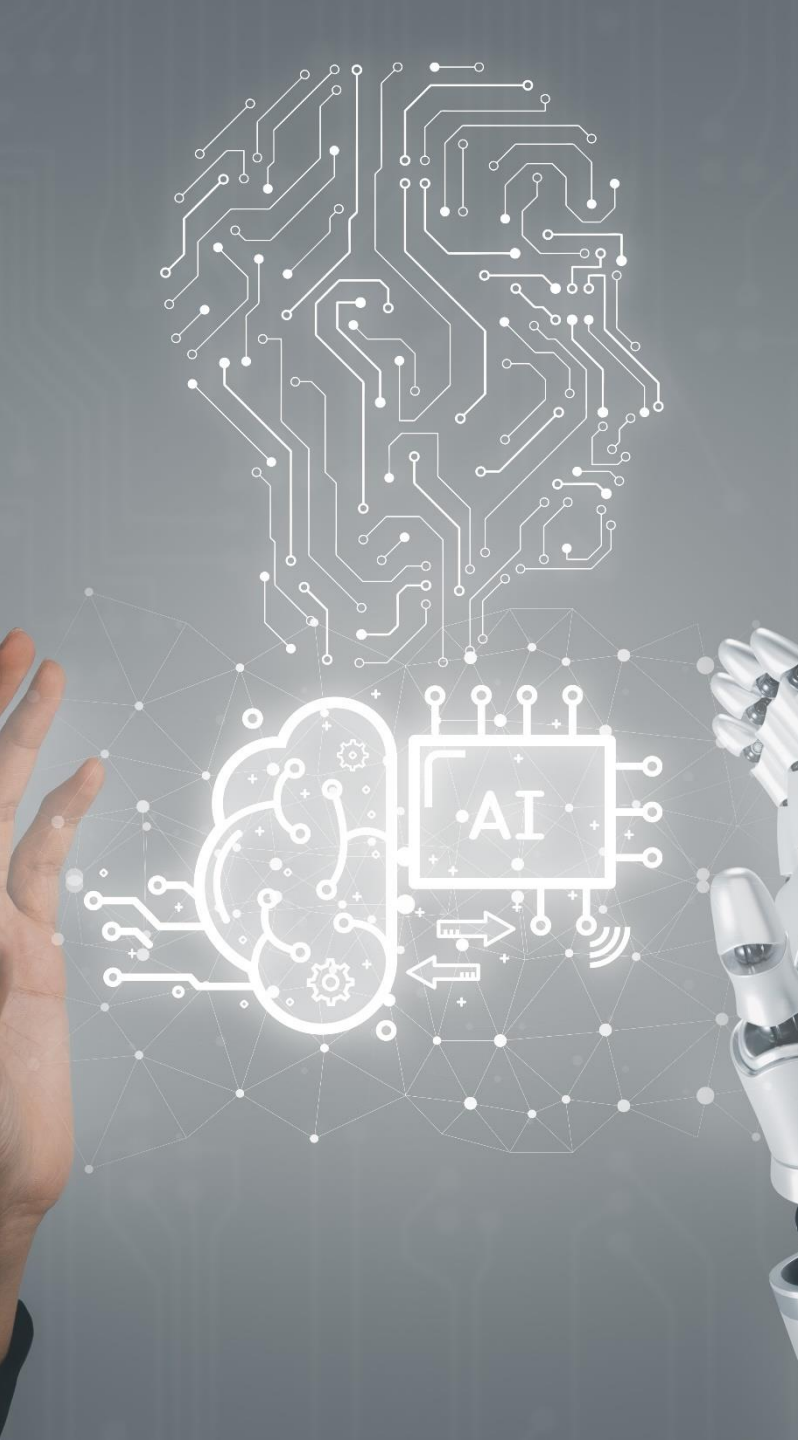


SEEBURGER

Thomas Kamper

SVP Strategic Product
Management

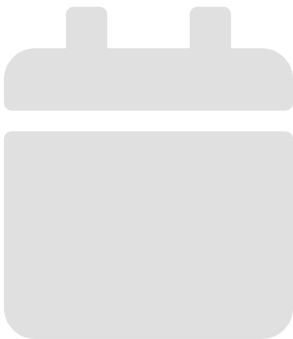




Agenda

01 | Less slides ...

02 | ... more demo and exchange!



SEEBURGER's first BIS Platform Offering providing AI Assistance is Available

(available with Quarterly Release of BIS 6.7.154)

BIS Mapping Designer as a key feature of the BIS Integration platform leverages the power of AI to maximize your productivity provided via a unified user experience.

The AI-assisted BIS Mapping Designer increases the productivity of integration teams by up to 60 %!

AI Assistance

The SEEBURGER BIS Platform leverages the power of generative AI to boost the productivity of BIS users. Enhance the efficiency of your integration team using AI-generated explanations and suggestions to successfully accomplish integration tasks faster and with trust.



Home > Integration Platform > AI Assistance



Help your team work smarter, not harder

AI assistance for the BIS Platform helps users execute faster on business requirements, solves the shortage of advanced experts and allows team members to work with confidence.

+ Turbocharge user productivity by up to 60%

Automate repetitive tasks and focus your expertise on complex challenges. Leverage AI as a powerful assistant to elevate your skills and tackle intricate problems.

+ Take your team to the next level

Empower every team member to achieve success faster and complete tasks more confidently and accurately.

+ Use AI in a governed and cost-effective way

Maintain full control over AI outputs.

There are at least 4 major use cases

Each single sub-task in this story is explained in the **SEEBURGER** Cheat Sheet, Booklet **'The Art of Efficient Prompting'**



Online 13. June 2024 14:00 - 14:45 CEST (Berlin)
Der KI-Assistent migriert XSLT-Mappings blitzschnell in BIS-Mappings!

Migrate easily XSLT Mappings to BIS Mapper

Working with code

Work with test data and sample files

Expand your understanding, knowledge and expertise and get easily familiar with integration topics



Demo

**Welcome
Daniel!**



We thought-through

We took care to design a **solution** that fits to different stakeholders' requirements, needs and wishes.

Management level

+ Do more with less

Boost your integration team's efficiency up to 60%, maximizing output without needing advanced experts. Empower beginners to contribute faster, allowing experienced team members to focus on strategic tasks.

+ Cost-effective solution

Get more done with existing resources, reducing dependence on costly external expertise.

CISO

+ Peace of mind with compliance

OpenAI's Enterprise Privacy Policy is readily available for your internal compliance departments to review. Additionally, SEEBURGER can assist with implementing governed use of the OpenAI API.

+ Transparent and secure integration

Maintain full control over AI outputs, ensuring alignment with your organization's security and privacy standards.

Advanced users

+ Work smarter, not harder

Automate repetitive tasks and focus your expertise on complex challenges. Leverage AI as a powerful assistant, not a replacement, to elevate your skills and tackle intricate problems.

+ Empower your team

Provide personalized support to beginners, allowing them to learn faster and contribute more effectively. Foster a collaborative environment where AI assists the entire team.

Starters and beginners

+ Effortless success

Achieve tasks confidently with built-in AI guidance, reducing frustration and ensuring accuracy.

+ Faster onboarding

Learn quickly and efficiently, reducing time spent navigating complexities.

+ Personalized assistance

Get tailored support for your specific questions and needs, making learning more engaging and effective.

We thought-through

We use **AI assistance for the DESIGN TIME** to create integration assets!

Our approach results in:

- + Cost-effectiveness using AI technology
- + Fast and reliable execution of integration processes as we use our runtime engine, not the AI itself as runtime
- + Reliable and consistent results for each execution which an AI as runtime cannot assure



Cost-effective

OpenAI API usage for these use cases is highly affordable.



Fast and reliable runtime

The BIS Mapping Engine executes proposed code, ensuring cost-efficiency, speed, and reliability compared to external AI services.



Easy integration

Manage OpenAI API access through BIS API management capabilities for governed and seamless use.



Compliance and governance

Retain full control. SEEBURGER ensures the AI doesn't make autonomous decisions, and you can accept or reject any suggestions. This transparency ensures compliance with AI usage policies.



Consistent results

Every execution of your BIS Mapping Engine code delivers the same predictable outcome, unlike external AI services.

We thought-through

We use **AI assistance for the DESIGN TIME** to create integration assets!

Our approach results in:

+ Fit with internal policies of AI usage (governance and compliance):

- Our approach meets many internal policy requirements for AI technology usage as we use AI-assistance for the design time only. The user decides to accept each proposal or reject it.
- Input via the API is not used for training purposes of the Large Language Model. See OpenAI's Enterprise Privacy for API access (<https://openai.com/enterprise-privacy>).
- SEEBURGER can provide further advise for governed OpenAI API usage.



Cost-effective

OpenAI API usage for these use cases is highly affordable.



Fast and reliable runtime

The BIS Mapping Engine executes proposed code, ensuring cost-efficiency, speed, and reliability compared to external AI services.



Easy integration

Manage OpenAI API access through BIS API management capabilities for governed and seamless use.



Compliance and governance

Retain full control. SEEBURGER ensures the AI doesn't make autonomous decisions, and you can accept or reject any suggestions. This transparency ensures compliance with AI usage policies.



Consistent results

Every execution of your BIS Mapping Engine code delivers the same predictable outcome, unlike external AI services.

SEEBURGER is not re-selling nor include the required OpenAI license(s) in its delivery – to be purchased by the customer organization

How to get started

Please note: An **OpenAI license** is required to leverage this capability.

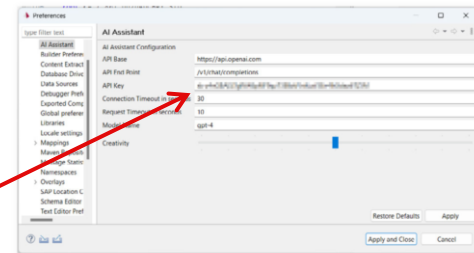
GPT-4 Turbo

GPT-4

GPT-3.5 Turbo

SEEBURGER data mapping specialists are using GPT-4 Turbo as this model contains the most actual data.

Our brochure provides hyperlink to OpenAI



Generated OpenAI API keys used to configure BIS Mapping Designer

Configured in 7 seconds!

Our customers will decide if the ENTERPRISE Privacy Statement of OpenAI for **API** fits to its internal governance policies <https://openai.com/enterprise-privacy>

The OpenAI license is charged by usage, without a fixed flat fee. We at SEEBURGER have not experienced monthly costs exceeding 100 € although we have dozens of users.

Would you like to learn more?

Visit our Website!

<https://www.seeburger.com/integration-platform/ai-assistance>

<https://www.seeburger.com/de/integrationsplattform/ki-unterstuetzung>

Enjoy a **video**,
get a **brochure** with information to the
point (EN/GER),
and most important:
become an AI Master in minutes using our
booklet 'The Art of Efficient Prompting!'



Book a training!

<https://www.seeburger.com/services-training/academy-bis-training/training-ai-assisted-bis-mapping-designer-s-6429>

AI-Assisted BIS Mapping Designer

Accelerate your journey to success

BIS Mapping Designer allows you to integrate powerful AI services, creating a unified user experience that supercharges your productivity. This powerful combination can **boost your efficiency by up to 60% on average**, no matter your level of experience. Ready to unlock this powerful new capability? Here's how!

In this 2-hour online course, we'll walk you through:

- Most important use cases
- The art of efficient prompting
- How to snip the OpenAI service into BIS Mapping Designer
- How to obtain the OpenAI license
- Q & A

AI-Assisted BIS Mapping Designer (Eclipse Plug-in)

📅 Training S-6429
⌚ 2 hours
💰 €280 per person
❓ Basic knowledge using BIS Mapping Designer required

➔ [Book your training](#)

Stay tuned!

More interesting **blogs** to come!



More interesting **events** to expect!

📅 Events



📍 Online 📅 June 13, 2024 ⌚ 16:00 - 16:45 CEST (Berlin)

The AI assistant migrates XSLT mappings to BIS mappings in no time!

SEEBURGER

Daniel Kruse

Head of Competence Center
Global Mapping Management

✉ d.kruse@seeburger.com



SEEBURGER

Thomas Kamper

SVP Strategic Product Management

✉ t.kamper@seeburger.de



Thank You

Questions or remarks?
We are here for you!

www.seeburger.com



Copyright

2024 SEEBURGER AG. All rights reserved.

The information in this document is proprietary to SEEBURGER. Neither any part of this document, nor the whole of it may be reproduced, copied, or transmitted in any form or purpose without the express prior written permission of SEEBURGER AG. Please note that this document is subject to change and may be changed by SEEBURGER at any time without notice. SEEBURGER's Software product, the ones of its business partners may contain software components from third parties.

As far as reference to other brands is concerned, we refer to the following:

SAP®, SAP® R/3®, SAP NetWeaver®, SAP Cloud Platform & Cloud Platform Integrator®, SAP Archive Link®, SAP S/4HANA®, SAP® GLOBAL TRADE Service® (SAP GTS), SAP Fiori®, ABAP™ and SAP ARIBA® are registered trade marks of the SAP SE or the SAP Deutschland SE & Co. KG (Germany). Microsoft, Windows, Windows Phone, Excel, Outlook, PowerPoint, Silverlight, and Visual Studio are registered trademarks of Microsoft Corporation in the United States and other countries. Linux is a registered trade mark of Linus Torvalds in the United States and other countries. UNIX, X/Open, OSF/1, and Motif are registered trademarks of the Open Group. Adobe, the Adobe logo, Acrobat, Flash, PostScript, and Reader are either registered trademarks or trademarks of Adobe Systems Incorporated in the United States and / or other countries. HTML, ML, XHTML, and W3C are trademarks, registered trademarks, or claimed as generic terms by the Massachusetts Institute of Technology (MIT), European Research Consortium for Informatics and Mathematics (ERCIM), or Keio University. Oracle and Java are registered trademarks of Oracle and its affiliates.

All other company and software names mentioned are registered trademarks or unregistered trademarks of their respective companies and are, as such, subject to the statutory provisions and legal regulations. 4invoice®, iMartOne®, SEEBURGER®, SEEBURGER Business-Integration Server®, SEEBURGER Logistic Solution Professional®, SEEBURGER Web Supplier Hub®, WinELKE®, SEEBURGER File Exchange®, SEEBURGER Link®, SMART E-Invoice® and other products or services of SEEBURGER which appear in this document as well as the according logos are marks or registered marks of the SEEBURGER AG in Germany and of other countries worldwide. All other products and services names are marks of the mentioned companies.

All contents of the present document are noncommittal and have a mere information intention. Products and services may be country-specific designed. All other mentioned company and software designations are trade marks or unregistered trade marks of the respective organizations and are liable to the corresponding legal regulations.

- The information in this document is proprietary to SEEBURGER. No part of this document may be reproduced, copied, or transmitted in any form or purpose without the express prior written permission of SEEBURGER AG.
- This document is a preliminary version and not subject to your license agreement or any other agreement with SEEBURGER. This document contains only intended strategies, developments, and functionalities of the SEEBURGER product and is not intended to be binding upon SEEBURGER to any particular course of business, product strategy, and/or development. Please note that this document is subject to change and may be changed by SEEBURGER at any time without notice.
- SEEBURGER assumes no responsibility for errors or omissions in this document. SEEBURGER does not warrant the accuracy or completeness of the information, text, graphics, links, or other items contained within this material. This document is provided without a warranty of any kind, either express or implied, including but not limited to the implied warranties of merchantability, fitness for a particular purpose, or non-infringement.
- SEEBURGER shall have no liability for damages of any kind including without limitation direct, special, indirect, or consequential damages that may result from the use of these materials. This limitation shall not apply in cases of intent or gross negligence.
- The statutory liability for personal injury and defective products is not affected. SEEBURGER has no control over the information that you may access through the use of hot links contained in these materials and does not endorse your use of third-party web pages nor provide any warranty whatsoever relating to third-party web pages.